

editorial  
editorial  
entrevista  
interview  
artigos convidados  
invited papers  
artigos submetidos  
submitted papers  
tapete  
carpet  
artigo nomads  
nomads paper  
projeto  
project  
resenha  
review  
expediente  
credits

# a cidade e os outros the city and the others

MARCELO TRAMONTANO, ANJA PRATSCHKE, PEDRO VELOSO, ANELISE VENTURA



issn 2175-974x | 2013



PT | EN

How to quote this text: [online] Available at: <<http://www.nomads.usp.br/virus/virus09/?sec=1&item=1&lang=en>>. [Accessed: 02 May 2022].

In presenting this ninth issue of VIRUS, we inform our dear readers that, from this edition, our journal will be published once a year.

With the steady increase of the urban population in the contemporary world, concomitant with the consolidation of a communication infrastructure that redefines boundaries and connections, the city as a subject of reflection acquires renewed interest. Its increasing complexity and changing nature find a match in the fabric of multiple perspectives and experiences that seek to unravel it: a city built from the interaction and experience of people in their concrete and virtual spaces, the city as a growing organism or as a palimpsest in continuous formation, the city as locus and process of reproduction of capital, the city as a data landscape susceptible to statistical techniques, among countless other possibilities. This convergence of reflexive glances supports this **ninth edition of VIRUS**, and the question we put to our collaborators: how different disciplines perceive the contemporary city?

This theme not only reaffirms the commitment of the academic journal to create a platform of intersection of different trajectories and thoughts on emerging actual issues. As in all previous editions, the multiple perspectives of the authors revolve around some common inquiries. But, in addition to a convergence of urban approaches, we wish to examine, with the theme "**The city and the other**", the very reflection on the act of looking at the city, as a self-conscious observation or as awareness of other possible viewpoints.

Within days, we received the submission of nearly forty articles, dealing with several issues, signed by researchers of different disciplines, from different places. Consequently, we have made a tremendous effort to balance editorial originality of their answers with a commitment to maintain the thematic coherence and respect the limits of available space. As a result, we organized 19 articles, 7 of which were submitted, 11 guests and 1 article by a researcher from Nomads.usp, that seeks to illustrate how the Research Center is dealing with the subject.

We have three special guests. Monika Fleischmann and Wolfgang Strauss, Fraunhofer Institut, Germany, discuss possibilities for the art to reveal a city normally invisible through the participation and interaction of people with information flows. In turn, the urbanist Lineu Castello, Federal University of Rio Grande do Sul, comprehends the interpersonal interaction as an exercise of urbanity that provides the appropriations and unexpected uses of the city, generating and reactivating its public places. A brief description of the contribution of the three researchers reveals, between the eyes of media art and urban analysis, intersections on the role of the performance of the townspeople in their production. Both papers submitted as those sent by all our selected authors contribute to the formulation of this and other intersections. They present urban reflections supported by comic strips, by documentary movies production, by sociology, by psychology, by anthropology, by sonic territories and public art experiments, by territorial marketing, by participatory design and by the analysis of commercial activities

It was also during this editorial process Brazil has experienced moments of tension between the city and the other, when the various public events that initially challenged in São Paulo the increased rate of the ticket of public transport and which spread throughout Brazil, including other agendas and debates. Driven by intense use of social networks on the Internet, this spread has surprised everyone by broad participation of society and have undergone constant and sometimes violent conflicts with a militarized police who reacts disproportionately and is as unprepared to deal with the expression of discontent of the civil society expressed in public places. If, on the one hand, the occupation of the city seems to awake the possibility of political cohesion, legitimate and effective action on many distortions of Brazilian society, on the other hand, unfolded also in internal conflicts between protesters with irreconcilable postures and demands. Facing these snapshots of a political space, we have invited Sonia Fleury, of the Getulio Vargas Foundation, to discuss in an interview the agglomeration of various looks over the city, seeking to reveal some of its features and characteristics.

Finally, the multiple looks shown here contribute to the continued and necessary fabric of reflections on the phenomenon of contemporary cities. We hope the ideas posted here are a stimulus for the complexity and consolidation of our relations with the city, and that our readers enjoy the many intersections, nodes, wires and lashings of this plot.



**Figure 01:** Image created from the road map of the state (2002) (Source:<http://www.sp-turismo.com/imagens/mapa/sp.pdf>. Accessed 09/12/2013)



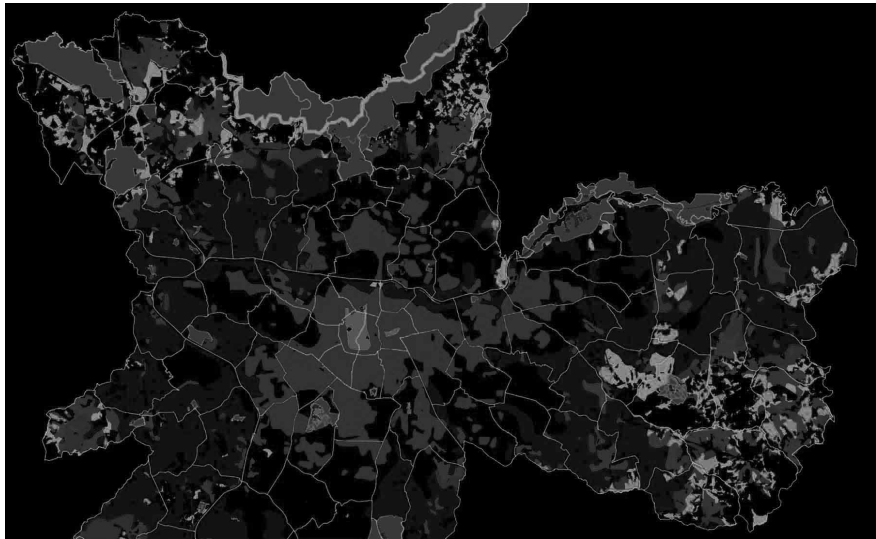
**Figure 02:** Image created from the transport system map of São Paulo (2007) (Source: <http://smdu.prefeitura.sp.gov.br> . Accessed 09/10/2013)



**Figure 03:** Image created from the map of rock and soil massifs of São Paulo (Source: <http://smdu.prefeitura.sp.gov.br> . Accessed 09/10/2013)



**Figure 04:** Image created from the urban land value map of São Paulo (2005). (Source: <http://smdu.prefeitura.sp.gov.br> . Accessed 09/10/2013)



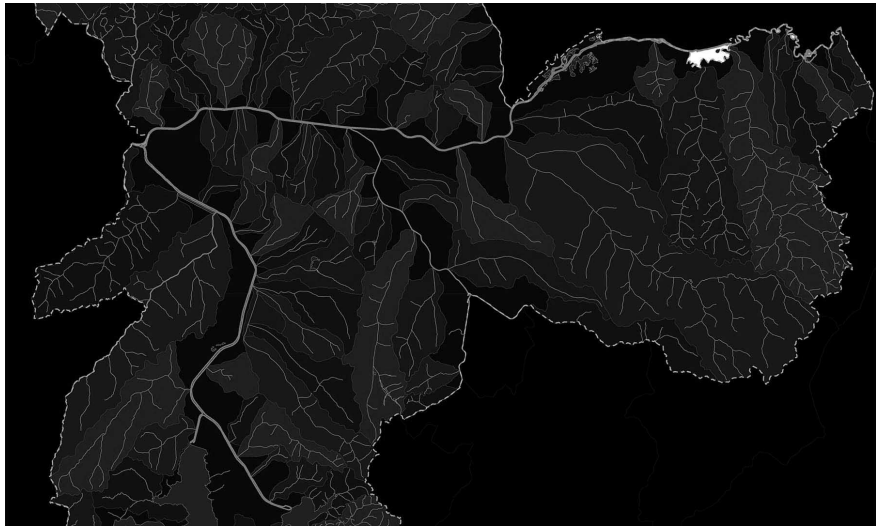
**Figure 05:** Image created from the map of the urbanized area of São Paulo second periods of expansion (1881-2002). (Source: <http://smdu.prefeitura.sp.gov.br> . Accessed 09/10/2013)



**Figure 06:** Image created from the map of the urbanized area second periods of expansion (1881-2002). (Source: <http://smdu.prefeitura.sp.gov.br> . Accessed 09/10/2013)



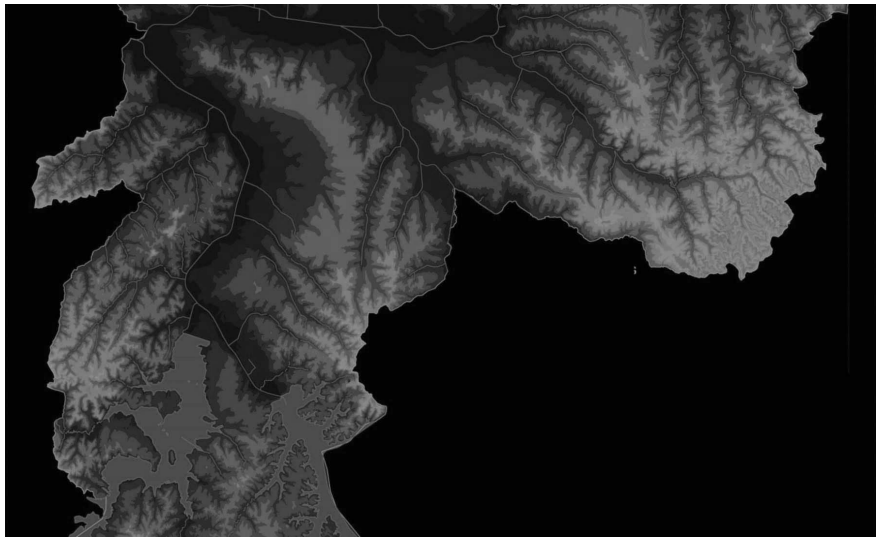
**Figure 07:** Image created from the map of income and living standard of housing in São Paulo (2000). (Source: <http://smdu.prefeitura.sp.gov.br> . Accessed 09/10/2013)



**Figure 08:** Image created from the map of watersheds of São Paulo(2012). (Source: <http://smdu.prefeitura.sp.gov.br> . Accessed 09/10/2013)



**Figure 09:** Image created from the slope map of São Paulo (2002). (Source: <http://smdu.prefeitura.sp.gov.br> . Accessed 09/10/2013)



**Figure 10:** Image created from the topographic map of São Paulo (2008). (Source: <http://smdu.prefeitura.sp.gov.br> . Accessed 09/10/2013)